

WENATCHEE DATA CENTER 1

A \$30 Million Dollar Data Center located in Wenatchee Washington.



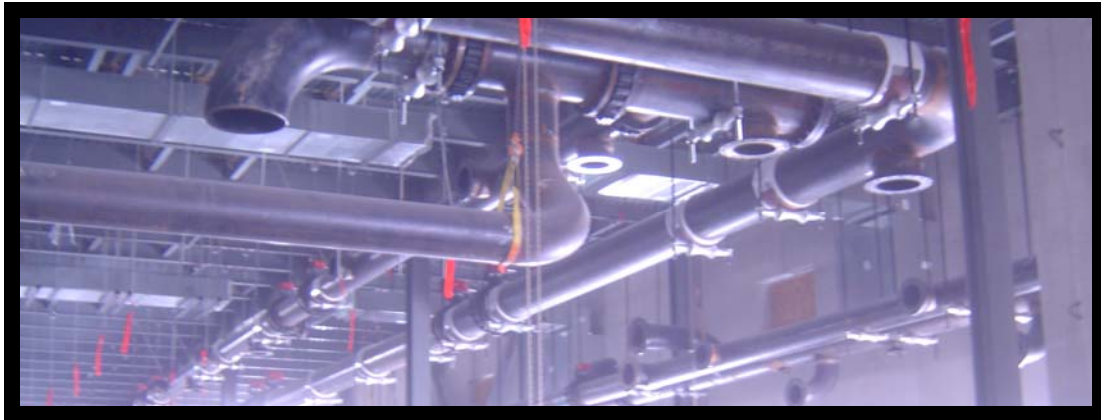
- 180,000 SFT Tier III Data Center in Wenatchee, WA
- Full Mechanical Construction, including lead 3-D coordination
- 7-month project duration for Phase 1
- Over 100 pipefitters on site
- 90% of the piping on site is being pre-fabricated in a nearby Apollo fabrication shop
- 6000 Tons of Chilled Water cooling capacity for Phases 1 & 2
- 180,000 gallon fuel system for generator back-up for Phases 1 & 2
- Design Assist Area's: Chiller Plant, Pump Rooms, CRAH's
- Design Build Area's: Outside Air Intake's, Thermal Expansion, Seismic Bracing



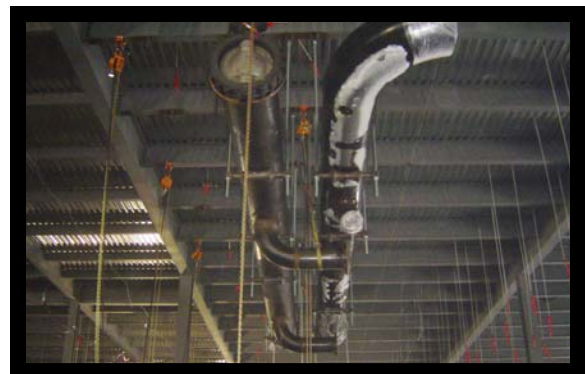
Phone (509) 586-1104 ■ Fax (509)582-6590 ■ Web www.apollosm.com
1201 West Columbia Drive ■ P.O. Box 7287 ■ Kennewick, WA 99336

QUINCY DATA CENTER 1

A \$25 Million Dollar Data Center located in Quincy Washington.



- 240,000 SF Tier III Data Center in Quincy, WA
- Full Mechanical Construction, including lead 3-D coordination
- 3600 Tons of Chilled Water cooling capacity for Phase 1
- On-site fabrication facility
- 240,000 gallon fuel system at full build out
- Labor Productivity 15% better than historical rates
- Design Assist Area's: Chilled Water Piping Configuration, Chiller Plant Layout, Emergency Generator System
- Design Build Area's: Thermal Expansion, Seismic Bracing, Fuel Oil System, Chemical Treatment



Phone (509) 586-1104 ■ Fax (509)582-6590 ■ Web www.apollosm.com
1207 West Columbia Drive ■ P.O. Box 7287 ■ Kennewick, WA 99336

QUINCY DATA CENTER 2

A \$17 Million Dollar Data Center located in Quincy Washington.



- 150,000 SF Tier III Data Center in Quincy, WA
- Full Mechanical Construction, including lead 3-D coordination
- 6000 Tons Chilled Water cooling capacity
- 240,000 gallon fuel system for generator back-up
- Labor Productivity 11% better than historical rates
- On site water treatment facility
- Design Assist Area's: Water Treatment Facility, Evap Cooling Systems, Data Hall 3 Dry Side Cooling
- Design Build Area's: Lift Station, Thermal Expansion, Seismic



Phone (509) 586-1104 ■ Fax (509)582-6590 ■ Web www.apollosm.com
1207 West Columbia Drive ■ P.O. Box 7287 ■ Kennewick, WA 99336